



CRUISE ITINERARY BEST OF CENTRAL ATOLLS

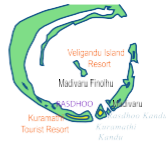
South Male' | Vaavu & Ari Atoll

Share with us [#snorkelcruisesmaldives](#)





MAP of South Male' / Vaavu & Ari Atoll



- KEY**
- EYDHAFUSHI — Atoll Capital
 - KIHAADHOO — Inhabited Islands
 - Maafushu — Inhabited Islands
 - DHARAVANDHOO — Domestic Airport
 - Island
 - Reef
 - Lagoon
 - Protected Marine Biosphere Reserves
 - First week Cruising Route
 - Second week Cruising Route



Yasawa Princess will be operated in the Central Atolls of the Maldives which includes, South Male', Vaavu and Ari Atoll. The Itinerary is designed for both Snorkelers and Divers covering the best in the region. Highlights Include Alimathaa night snorkeling experience with Nurse Sharks, Sting Rays and Giant Travalys. Whaleshark Excursion on the southern edge of Ari atoll and Manta Ray Excursion. During the cruise we will visit Sand Banks, Deserted Islands, Picnic and Local Islands.

The cruises are from Monday to Monday for non-stop 14 nights. Guests staying for 7 nights will need to take domestic flight on Day 8 to or from Male to Maamagili.





DAY - 1 (MONDAY)

Anchorage: Male

Welcome to the Maldives, Yasawa Princess will be anchored just off of Villigili, a convenient 20 minutes boat ride from Male International Airport. Our Guest Relations Officer (GRO) will greet you on arrival and assist you to the boat's private tender for your transfer. On arrival to the boat we will help get you checked into your cabin and provide a welcome briefing including Safety procedures and introduction to your Yasawa Princess cruise experience. On this informal session you will meet guests onboard, the dive team and the crew members who will assist you throughout your cruising holiday. Followed by a pre-dinner cocktail on the Bar/Restaurant deck and watch the sunset over the Indian Ocean





DAY - 2 (TUESDAY)

Depart from Male'

Anchorage and cross Vaadhoo Channel to South Male' Atoll.

Morning and afternoon visit the beautiful Sand Bank (Kalhuhuraa), where you can relax and soak up the sun, take a dip in the warm Indian Ocean. *Beach Umbrellas will be placed on the sand bank for some shade.



Diving : Vaagali Caves & Vaagali Thila

Vaagali Caves – Easy Divesite as a start located outside the picnic island Vaagali. Some Overhangs along the wall, lot of schooling fish and Napoleons, Whitetips and Sting rays can be spotted.

Vaagali Thila – Large Pinnacle in Vaagali Chanel, with beautiful coral and fish life. With incoming current there is a good possibility of sighting Schooling sharks cruising in the current.





DAY - 3 (WEDNESDAY)

Short Cruise within the atoll to Rannalhi.

Morning and afternoon visit to the Resort island Rannali, a small boutique resort island located on the western edge of South Male' Atoll. Easy Excess for the surrounding reef for snorkeling. Spa and Other facilities can be booked directly on the resort.

Night Fishing Trip will be organized by the crew from 1730 Hrs - 1930 Hrs. Traditional Hand Line will be used.

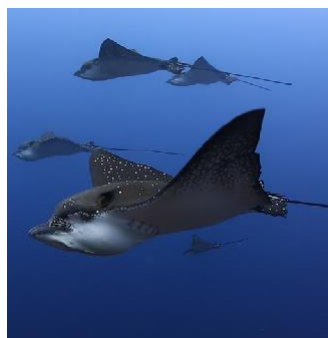
*if there is more than 15 Pax an Additional Night Fishing trip will be organized during the week



Diving : Guraidhoo Corner & Villivaru Giri

Guraidhoo Corner – one of the best dive sites in south male' atoll for its reef formation & Fish Life. With current coming in to the atoll you will see Grey Reefs, White Tipped Reef Sharks, Schooling Eagle Rays and Dog Tooth Tuna's Passing By

Villivaru Giri - small pinnacle inside the atoll with lots of fish and beautiful overhangs. Good site for smaller special things like Frog Fish, Ghost pipe fish, and many more.





DAY - 4 (THURSDAY)

Early Morning Cross the channel into Vaavu Felidu Atoll to reach Alimatha Sand bank (Approx 5 Hrs)

Located on the Eastern Edge of the Atoll. A big turquoise lagoon surrounds this sand bar and an attractive reef to snorkel.

Morning and afternoon will be spent on this sand bank. Lunch will be served on the boat. Sun Umbrellas will be placed for shade if the conditions are favorable.

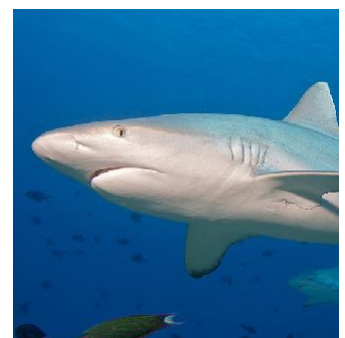
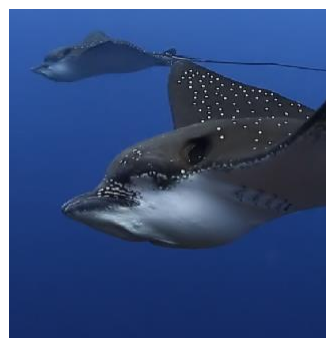
Optional: Night Snorkeling Session on Alimatha Resort House Reef, this excursion has been one of the favorites among our guests. Huge Nurse Sharks, Sting Rays & Travallys can be spotted throughout this experience. Chargeable USD 15.00 incl. GST



Diving : Miyaru kandu & Devana Kandu

Miyaru kandu – Channel Dive, where you cross the channel from one side to the other looking out for larger pelagic's like Sharks and Eagle rays passing by.

Devana kandu – Narrow Channel with a reef in the middle. Ideal for Big Fish, like sharks, Napoleon and Eagle Rays. Turtles can be also sighted on the shallower part of the dive.





DAY -5 (FRIDAY)

Leisurely Cruise in the morning to Anbaraa

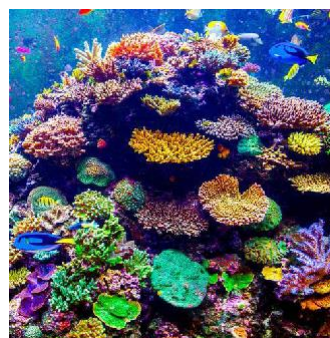
Anbaraa, Small picnic island located on the north western side of Vaavu Atoll. Easy access to the reef for snorkelers.

Evening BBQ - our crew will set up for dinner under the stars on the beach. This is probably one of the favourite and most memorable evenings of our cruise. Our chefs will prepare a Maldivian beach BBQ, with drinks and music, whilst we enjoy the amazing beauty and a spot of stargazing.



Diving : Rakeedhoo Kandu

Rakeedhoo Kandu – Corner of rakeedhoo channel offers weel grown hard coral and overhangs, covered with soft corals on the roof. Bigger Pelagic fish can be spotted with in coming current.





DAY - 6 (SATURDAY)

Early Morning Cross the channel to South Ari Atoll (Aprox. 6Hrs)

Oshagali Finolhu

Tender will be ready as soon as we reach this sand bank in south ari atoll. Reef surrounding the sandbank has lot of healthy hardcorals, snorkelers love this reef. Lunch will be served on the boat and will return to the sand bank in the afternoon.

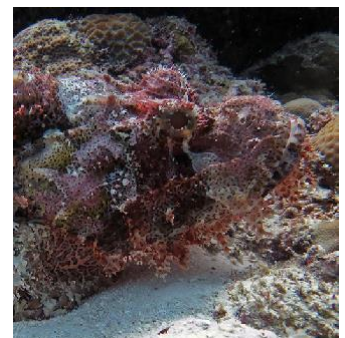
Night Fishing Trip will be organized by the crew from 1730 Hrs - 1930 Hrs. Traditional Hand Line will be used.



Diving : Kuda Rah Thila & Hudhu Thila

Kuda Rah Thila – Protected dive site, small pinnacle starting top reef at around 16m with soft corals and overhangs. Thousands of Blue Stripped Snappers can be found at the top of this reef.

Machafushi Wreck – Only Wreck in the region, a purposely sunk, small cargo freighter. Lots of Coral Has grown on top of the making it an healthy artificial reef. Lots of Glass fish inside crevices, lion fish, scorpion and stone fishes can be spotted.





DAY - 7 (SUNDAY)

Short Cruise from Oshagali to Ariadhoo

Ariadhoo

An agricultural Island with lot of plantation. Excess to a sand stretch to relax, easy excess to the ocean for swimming and snorkeling.

Optional: Whale shark excursion, guests will go out on the dive dhoni in search of these gentle giants. This region in the Maldives has the highest probability in finding the Whale Shark. (Chargeable USD15 incl. GST)

Local Island Visit late afternoon to Maamagili to wander through experiencing the local lifestyle and it is a good opportunity to do some shopping for souvenirs for the loved ones.



Diving : Maamagili Corner / Kudadhoo Beyru

Both dive sites are outside of the atoll easy wall dives with the chance of spotting a whale shark.





DAY - 8 (MONDAY)

The boat will be anchored off Maamagili Domestic Airport for mid cruise Arrivals / Departures.

At Least one excursion will be provided to the guests staying onboard for the following week.





DAY - 9 (TUESDAY)

Short Cruise North West inside the Atoll to Hurasdhoo

Hurasdhoo, a small deserted island with white sandy beach surrounding the island. Nice House reef for avid snorkeler. Beach Umbrellas will be placed if the conditions are favorable.

Optional: Manta Ray excursion, guests will go out to Rangali Madivaru, a manta ray cleaning station. Peak Season (January – April) (chargeable USD15 incl GST)

Night Fishing - Tonight's fishing trip is targeted for reef fish with traditional Hand line bottom fishing technique. Whilst we encourage the practice of "catch and release" and sustainable fishing practices, we are also happy to help out and take back a fish for dinner.



Diving : Angaga Thila & Aiyabe Thila

Angaga Thila – Small pinnacle with a top reef of 6-8 Meters. Turtles feed the corals on the top reef while sharks cruise in the current. Can circle around the pinnacle.

Aiyabe Thila – 100m Long Pinnacle, we only dive one side of this pinnacle, a large overhang covers the edge of the reef with beautiful hard and soft corals. Sharks can be spotted if there is a drift.





DAY - 10 (WEDNESDAY)

Embudu

Small deserted island on the western edge of the atoll, with few plantation and a long stretch of white sandy beach.

Morning and afternoon excursions are arranged, and if conditions are favourable Beach Umbrellas are placed for shade on the beach. House reef of the island is good for snorkelling, with a bit of luck who might find turtles or Eagle rays passing by.

Night Fishing Trip will be organized by the crew from 1730 Hrs - 1930 Hrs. Traditional Hand Line will be used.



Diving : Moofushi Kandu & Embudu Thila

Moofushi Kandu – A Channel dive with a Manta Cleaning Station. Lots of fish Life, with incoming current Grey Reef Sharks, White Tips, Eagle rays can be spotted in front of the channel.

Embudu Thila – Small pinnacle with a shallow top reef of 5-6 meters, healthy coral all around the pinnacle home for many reef Fishes.





DAY -11 (THURSDAY)

Raiydhigaa

Picnic island with a natural harbor. The reef surrounding the island has an enclosed lagoon with 2 narrow channels for vessels to enter. This island has a long white sandy beach on one end. Snorkelers can easily swim from the beach to deeper water.

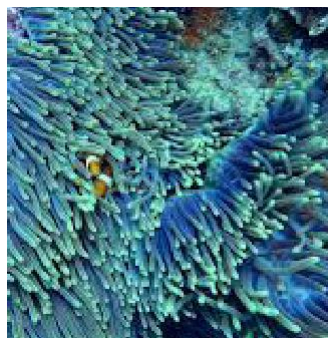
Full Day will be spent on the Island, Picnic Lunch will be prepared by our Chefs. Guests will be taken back to the boat at 1600Hrs. and will return to the island at 1900Hrs for the BBQ Evening. Music and Entertainment after Dinner.



Diving : Dega Thila & Miyaru Gaa Thila

Dega Thila – A Macro fans dream, 2 coral formations separated from the main reef is full with soft corals and schooling fish. Leaf Fishes & Ghost Pipe fishes can be spotted with some luck

Miyaru Gaa Thila – Small pinnacle with a top reef of 5-6 meters, ideal to dive slow looking for octopuses, scorpion and lionfish. Sharks and Sting rays can be found resting on the bottom.





DAY - 12 (FRIDAY)

Alikoi Rah

Sand bank located in the centre of Ari Atoll, Surrounding a well grown reef. Snorkelers love this house reef as there is lot of fish and turtles and rays can be spotted with some luck. Morning and afternoon excursions arranged to this sand bank.

Sunset Cruise to Maaya Sand Bank.



Diving : Fish Head / Kandu Thila

Fish Head – underwater pinnacle . Thrilling Overhangs and abundance of Fish Life. One of the best in the region

Kandu Thila – Narrow submerged reef located inside a very wide channel. Expect to see White Tip and Grey Reef Sharks and Napoleon Wrasse





DAY -13 (SATURDAY)

Maayafushi Sandbank

A large sand bank located at the northern edge of ari atoll. Flocks of common Seabirds can be found on this sand bar. Reef with lots of nice coral and fish for snorkeling. Sun Umbrellas will be setup if the conditions are favorable.



Diving : Maaya Thila / Bathalaa Maaga Kan

Maaya Thila - one of the most famous night dive site in the Maldives, Sharks and sting rays hunt at this site at night.

Bathala Maagaa Kan - an extension of the reef sloping down inside a channel, with large pelagics crossing the channel.





DAY - 14 (SUNDAY)

Cross Alihuras Kanduu, head back to Male'

Last Swim, for a final swim in the warm Indian Ocean we will stop at a sand bar on our way back to Male'. The journey from North Ari Atoll to Male' will take around 4-5 Hrs. Once we reach Male' our dhoni will be ready to take you to Male' the capital of Maldives, you can visit the local & Fish market, wander around and have an ice cream or do some shopping for souvenirs.





DAY - 15 (MONDAY)

End of a 2 week Cruise, a nice relaxing breakfast overlooking the Indian Ocean before we arrange your transfer for departure to the airport. Guests staying on-board for the following cruise can enjoy a day of relaxation.

Optional Excursions can be arranged on Request basis and depends on Availability.

TERMS AND CONDITIONS:

- Itineraries are subjected to change depending on Weather Conditions, Island availability and at the discretion of the Captain.
- If an island is unavailable under any circumstance, we will provide an alternative with similar activities.
- BBQ will be arranged on the island depending on the weather, if not events for BBQ night will be moved to the boat, along with music.
- Itineraries will be briefed at Dinner Time for the following day.
- Chargeable Excursions will be billed to your room and settled at the time of check-out.
- There are no Islands / Sand Banks near Male' that we could visit on Arrival / Departure Day.

TEAM YASAWA PRINCESS WISHES YOU
A MEMORABLE CRUISE!